



Welcome to Henry Ford Museum of American Innovation



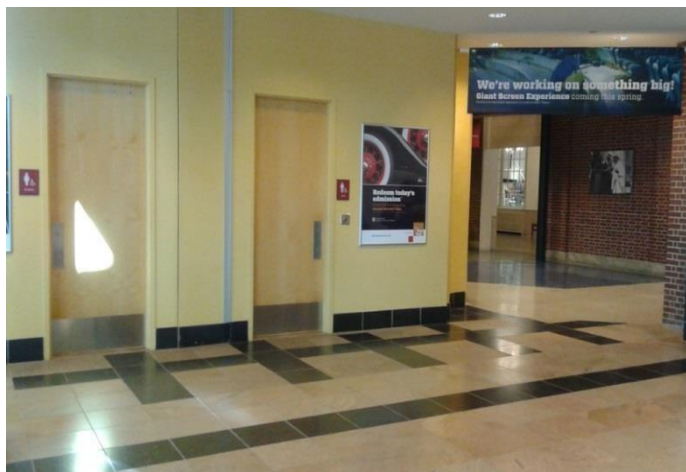
Henry Ford Museum of American Innovation is a very large museum. There are many interesting things to see and do. Many people visit the museum every day. During your visit, you should find the exhibits that are most interesting to you and be careful not to damage any items, so that others can enjoy them too.

The Henry Ford and the Autism Alliance of Michigan have put together this social and sensory narrative to help prepare you for your visit to Henry Ford Museum of American Innovation.

When you enter the Welcome Center entrance, you will see a replica of the Wright Flyer overhead. This was the very first airplane. There may be crowds of people in the Welcome Center. You may have to wait in line to buy tickets. It will only take a few moments. Visitors who have memberships will be able to bypass the line and enter the museum faster.



There are restrooms at the front of the museum. You should visit the restroom now to save time later.



There may be a line for the Giant Screen Experience. This is a movie theater. Like at the movies, there is a concession stand with snacks and there are movies playing each day.



The museum store is at the front of the building. There are many interesting items in the store. The store also has lots of breakable items. The lights are bright and music is playing.

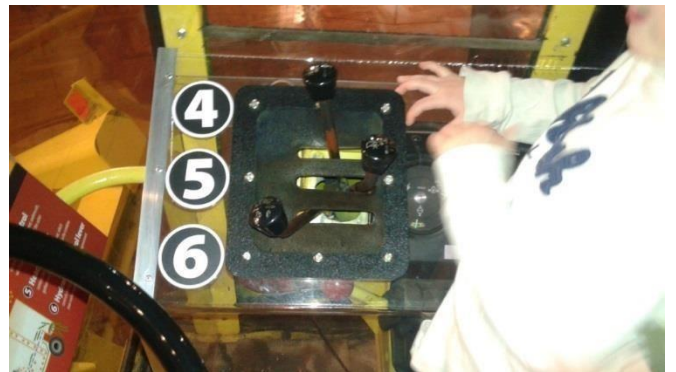


Before you enter the museum, you will have to show the person at the counter your ticket. Get ready! They can stamp your hand in case you want to leave and come back later.



Agriculture

In the Agriculture exhibit, you can see tractors, plows, and other farming equipment. There are lots of artifacts on display. Remember that there is no climbing and no running in this exhibit. However, there is one tractor that you can climb up on. It is the 1975 Sperry-New Holland Combine. After climbing the stairs up into the Combine, you can steer the wheel, push the buttons, and imagine that you are the farmer. Remember that only two people will fit into the cab of the Combine at a time, so you will have to wait your turn.



You will see a vehicle near the Agriculture exhibit that is shaped like a hot dog. This is called the Weinermobile. Next to the Weinermobile is American Dog House. It is a restaurant.



Fully Furnished

Fully Furnished shows kitchens, furniture from the past, and even dollhouses. This is a quiet area with lots to look at. There is no climbing in this exhibit. There are video screens that you can touch and watch videos on to learn more about different pieces of furniture.



Mathematica

Near the Fully Furnished exhibit is Mathematica. Here you can learn about math and try out a number of different hands-on activities. It may be crowded in this exhibit, with lots of other people also doing the activities. You may have to wait in line to try the activities. While in the exhibit, you may hear the sound of balls falling through the probability machine on display.



Made in America-Manufacturing

In Made in America-Manufacturing, “Build a Model T” lets you help build a Model T car with your family. In order to help build the car, you will be given one part to put on the car. You may see some tools, but those are not for touching. You will use your hands only. There will be a helper. If you want to see the car all completed, you can come back after 3:00 p.m. to visit. That is the time that the car is done. You can take your picture with the car.



Visit “Henry’s Assembly Line” too if you love building things. Here you will have a job to do to put small Model T cars together. Your job would have been a real job on the assembly line! You will work with other people to put the Model T cars together and will have to work for one whole song that lasts two and a half minutes. After the cars are built, you will help take the pieces apart. This takes just a couple of minutes. Your job is to be a good worker and see how many cars you can help to build.



Made in America-Power

Next is off to see the steam engines. On the weekends, the Corliss Steam Engine is demonstrated and it makes a very loud sound when the steam escapes. You can also hear the swooshing sounds of the wheel starting.



If you love lights, look for the light bulbs. Take a turn making electricity to light these light bulbs at the Tower of Power! It takes a lot of effort and the noise gets louder the harder you turn, but you get to see how many light bulbs you can turn on with your own energy.

If you would like to see the inside of an electric generator, there are steps to climb. There are no other climbing spots in this area because of the high voltage electrical.



Your Place in Time

In Your Place in Time, you can learn about what it was like to live during the ten decades of the 20th century. You will see many artifacts on display in this exhibit. You can sit in a hundred year old Overland Touring Car and stand in front of a green screen to become part of a music video.



When you leave Your Place in Time, you may hear a TV. This TV is playing *The Henry Ford's Innovation Nation*. You can take a break here and watch the show.



Dymaxion House

Next to a gallery with changing exhibits is the Dymaxion House. There is a video at the entrance to this exhibit that shows how this house was made. It was designed by Buckminster Fuller, the same architect who designed the Epcot dome at Walt Disney World. Wheelchairs and strollers have to be left at the top of the ramp, before entering the Dymaxion House.

You can go inside and check out the Dymaxion House. If you look over the railing, you can see that the house is not on the ground. You can touch the light switches. You can also push the button that rotates the shelves. Be gentle and do not climb or jump on the bed. We want the house to last for many more years.



With Liberty and Justice for All

The With Liberty and Justice for All exhibit is about American freedom and independence, from the American Revolution to the Civil Rights Movement.



You can see George Washington's camp bed and the chair in which President Abraham Lincoln was shot during 1865, while attending a play at Ford's Theatre in Washington D.C.

You can also sit in the same seat that Rosa Parks did on a bus in Montgomery, Alabama, in 1955. You will have to climb up big steps to get inside the bus. When inside, you can listen to audio about Rosa Parks.



There is intense content in this exhibit that your parents may decide is not age appropriate for you. Some of the exhibits are about segregation, the Ku Klux Klan, and women's suffrage. Images and speeches may be intense for younger children.



Genius at Play Store

The Genius at Play store, located along the front wall of the museum, features many toy items. Parents have to pay for items in the store if you want to take them home. You can only touch these items with your parents present. This store has bright lights so that you can see all of the items very well.

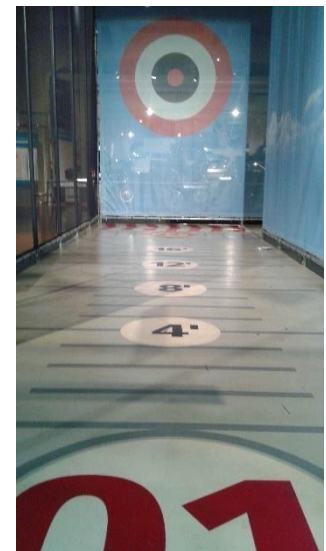


Heroes of the Sky

In Heroes of the Sky, you can see many different planes from throughout history. You can even sit inside a plane. In this exhibit, you will hear the sounds of wind and airplanes' propellers and engines.



Also in Heroes of the Sky, you will have a chance to make a paper airplane and see how far it will fly in the testing area. There may be lots of other people in this area, also making and testing paper airplanes.



You can watch videos about flights by Charles Lindbergh and Amelia Earhart. These videos are exciting, but there are also flashing lights and loud excited voices telling these stories if you push the button.



You can also stand on a 'wing' and watch a movie that makes it seem like you are flying. You will feel vibrating and hear loud propeller and engine noises, just like on a plane. If you are scared of heights or get motion sickness, you may want to avoid this movie, even though your feet never leave the ground!



There is a K'Nex area outside of the exhibit available for children to play in. It may be crowded and noisy here with lots of children playing.



Driving America

You have now entered Driving America. You will see neon signs from Lamy's Diner. You can get sandwiches, milkshakes, and other foods there. You may notice a McDonald's sign, but Lamy's Diner serves old-fashioned lunch.



If you love cars, you can follow along a timeline from the oldest car. There are interactive screens, photographs, and objects from collectors throughout the years.



Car fanatics will love this exhibit! Luxury vehicles, trucks, school buses, camping vehicles, and more are all there to see. Bright lights are shining from the ceiling onto some of the vehicles.



In the Drive-In Theater, there is an eight minute film about car culture. It is a loud film.

In the Texaco Station, you can put parts on a car. The tool drawers open but you cannot take tools out. You can lay and slide under the car to 'fix' it.



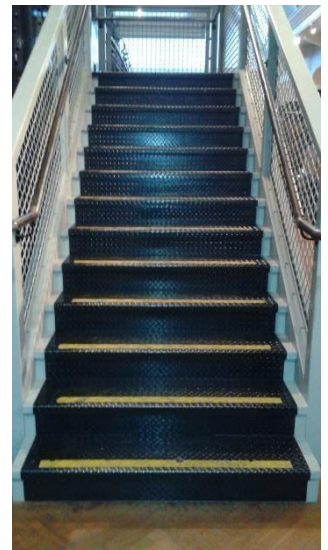
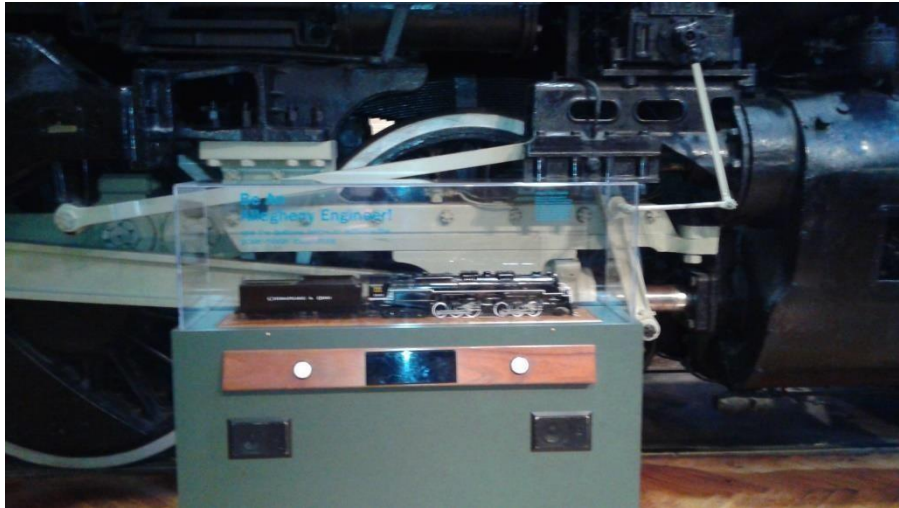
Presidential Vehicles

Here you can view presidential vehicles used by Theodore Roosevelt, Franklin D. Roosevelt, Dwight D. Eisenhower, John F. Kennedy, and Ronald Reagan. There is also a restroom near the front of the museum and the presidential vehicles.



Railroads

Time to visit the Railroads exhibit. This exhibit can be noisy with the sounds of a train whistle and bells. If you take a turn, only ring the bell one time, so as to not hurt others' ears. There are interactive videos at the Allegheny Locomotive. You can also climb up stairs to see inside the cab of the Allegheny.



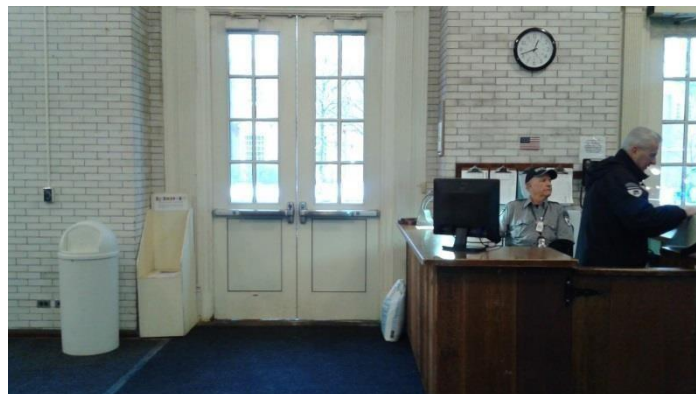
There are play places for children near the Railroads. There are also model trains to watch. See if you can find your face on the camera at the front of the model train!



Small children can visit the block area and there are couches for parents.



There will be a security guard at the staff entrance near the Railroads. This is only for staff or emergencies. Children should not go near this exit.



Michigan Café

There is a restaurant called Michigan Café down a hallway connected to the museum. This restaurant serves lots of different types of food! The menu is right outside the restaurant on the wall, so you can see exactly what they serve.



Thank you for visiting Henry Ford Museum of American Innovation!

It takes a lot of time and several visits to be able to enjoy this large museum. Hopefully you have enjoyed visiting Henry Ford Museum of American Innovation and will come back again soon!

